

BLACK RESIDUAL WASTE BIN

for residual waste

ash, protective sheets, files, baking paper, left over handicraft materials, brushes, extractor hood filter, disposable razors, light bulbs, toiletries (tooth brushes, sanitary towels, cotton pads), cassettes, cat litter, sweepings, ceramics, adhesive tape, bone, carbon paper, cloths, leather, rags, paper towels, paper hankies, greaseproof paper, nylon stockings, plexiglass, porcelain, plaster, razor blades, schott glass, serviettes, vacuum cleaner bags, records, shards of glass, mirror glass, pieces of soap, toys (apart from electronic ones), pencils, left over carpet, bandages, dirty packaging, cotton, nappies, cigarette ash, cigarette ends



Note, the following may not be put in:

batteries, small electrical appliances, energy saving bulbs



BROWN COMPOST BIN

for compostable waste

tree needles, flowers, egg shells, windfalls, vegetable waste, hedge trimmings, coffee filters, coffee grounds, foliage, food waste (without packaging), fruit waste, grass cuttings (wilted, dry), bark, left over salad, cut flowers, food left overs, shrubs, bush cuttings, tea bags/leaves, pot plants (without the pot), wild herbs, citrus fruits, branches



Note, the following may not be put in:

plastic bags (bin liners made of plastic), faeces, liquids, stones



BLUE WASTE PAPER BOX

for paper / cardboard / cartons

letters, brochures, lunch bags, books (without plastic coating), egg cartons, gift wrapping paper, exercise books, illustrated magazines, catalogues, cartons, packing paper, paper and cardboard packaging, brochures, post cards, mailing tubes, writing paper, telephone books, newspapers, magazines



Note, the following may not be put in:

wallpaper, left over carpet, paper towels



GLASS WASTE CONTAINER

for container glass

glass bottles, preserving jars, marmalade jars, champagne bottles, schnaps bottles, wine bottles, syrup bottles, flasks



Note, the following may not be put in:

sheet glass, window panes, mirror glass, light bulbs



HAZARDOUS SUBSTANCE COLLECTION

for toxic waste

Waste containing hazardous substances belong in the hazardous waste collection. Hazardous substances are often marked with danger symbols



YELLOW BIN

for sales packaging

Metal: aluminium lids, aluminium dishes, aluminium foil, aluminium tubes, drink cans, canned food cans, spray cream cans, screw closures, spray cans (empty), blanking caps

Plastic: plastic bags, styropor dishes, tubular bags, carrier bags, detergent bottles, plastic cups, plastic bottles, vacuum packaging



Composite materials: drink cartons, milk cartons (Tetrapaks), composite packaging, plastic, paper and aluminium bags (sweets, soups, sauces)

Note, the following may not be put in:

residual waste, glass packaging, paper or cardboard packaging



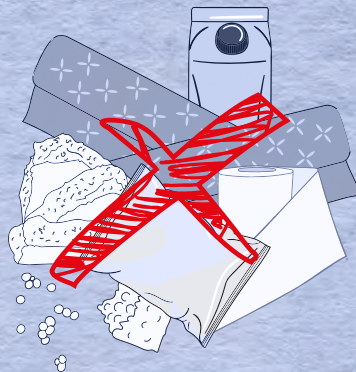
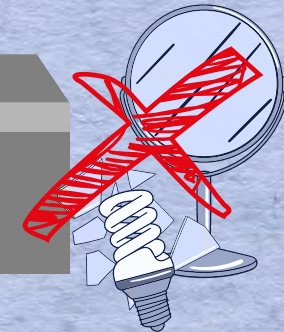
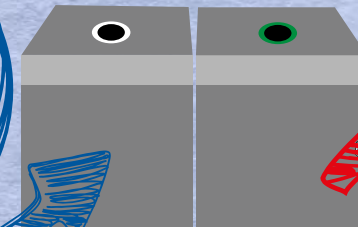
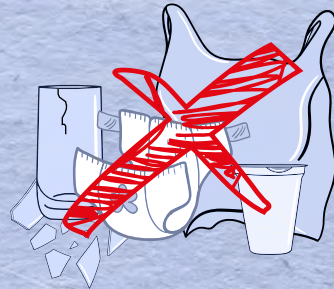
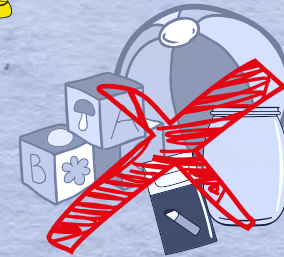
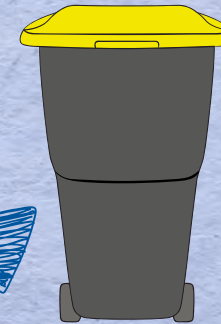
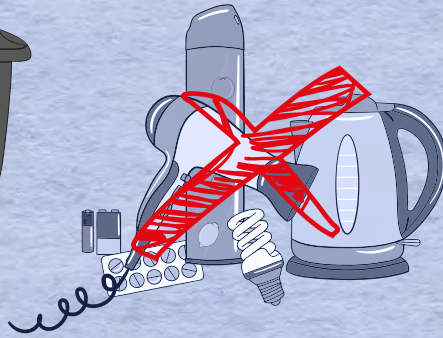
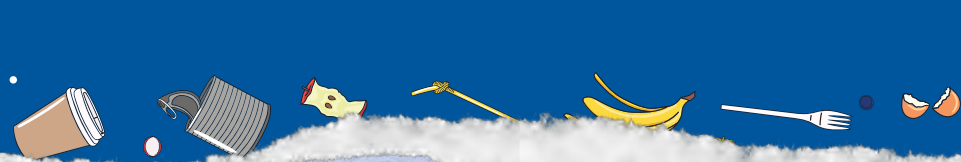
LANDKREIS CLOPPENBURG
UMWELTAMT – ABFALLBERATUNG

Eschstraße 29 • 49661 Cloppenburg

☎ 04471/15 428 ☎ 04471/15 432

E-Mail: abfallberatung@lkclp.de

WIR SORTIEREN ABFALL.



WIR ISTHIER.

LANDKREIS CLOPPENBURG
UMWELTAMT – ABFALLBERATUNG

Eschstraße 29 • 49661 Cloppenburg

☎ 04471/15 428 ☎ 04471/15 432

E-Mail: abfallberatung@lkclp.de